

# ELEPHANT<sup>®</sup> MEW

## HI-LIFT MINE EQUIPMENT WASHER

### Chassis:

- Chassis from well-known chassis supplier (Volvo)
- Tanks in stainless steel, all surfaces are metallized or painted using high quality priming and painting
- Unique suspension stabilizing system. No outriggers required
- Rear platform for long distance transportation of basket

### Color Scheme:

- Chassis cabin, tank section and boom system; white color RAL 9016

### High Reach Telescopic Boom System:

- One-man operation enabling driving the unit from basket
- Open basket to accommodate 1 or 2 persons during operations
- Touch sensors on basket to enable safe maneuvering (optional)
- Fully hydraulic, proportionally controlled work platform with;
  - max. working height of up to 15 meters (*approx. 49 feet*)
  - max. horizontal outreach of 10 meters, 8 (*approx. 33 feet*) measured from 1 to 8 meters height
  - max. rated load in basket: 205 kg
- LED working lights on boom and basket

### Tank:

- 7000 liter water/600 liter detergent tank
- Stainless steel tanks
- Filling couplings for tanks
- Onboard refilling solution for detergent

### MAJOR ADVANTAGES

- » All-in-one work safe approved unit
- » Hot water high pressure washer
- » High mobility with little set-up time. No outriggers required
- » Ease of use/One-man operation
- » Closer proximity with high reach boom
- » Energy and consumption efficient washer
- » Cameras mounted for improved visibility/safety
- » Multiple pressure guns in basket and at ground level

### CERTIFICATIONS

- » CE certified unit
- » ADR registered vehicle
- » Dpt. of Mines & Petroleum Australia Certified



# ELEPHANT<sup>®</sup> MEW

## HI-LIFT MINE EQUIPMENT WASHER

### Heating & Fluid System:

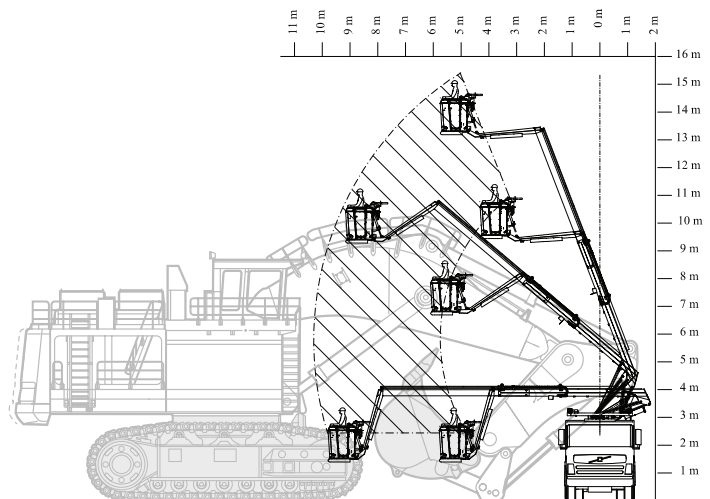
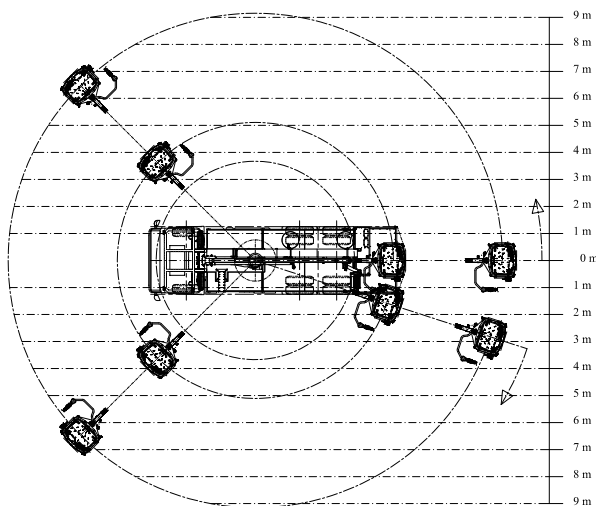
- Heat efficient 230 kW diesel heating system
- Delivers 60 degrees hot water promptly after start
- Hot water – variable operation temperatures up to 95 degrees
- High/low pressure and high/low volume washer system
- Automatic detergent mix system; 5-20%
- 3 spray guns in basket and 2 spray guns at the rear platform of the vehicle
  - Two hand-held high-pressure guns able to spray 22 l/min at max. 200 bar (basket/platform)
  - Two hand-held low-pressure guns able to spray 120 l/min at max. 20 bar (basket/platform)
  - Swing arm mounted low-pressure gun able to spray 230 l/min at max. 20 bar (basket)

### Control System:

- PLC-based control system, incl. module for trouble-shooting and self-diagnostics

### Information Displays:

- Tank level indications
- Water temperatures



For questions and requests for further information please contact:

#### Vestergaard Company A/S

Skullebjerg 31 • Gevninge  
DK-4000 Roskilde • Denmark  
Tel: +45 4642 2222  
sales@vestergaardcompany.com  
www.vestergaardcompany.com

#### Vestergaard Company Inc.

1903 W. Rte. 120  
McHenry, IL 60051 • USA  
Tel: +1 815 759-9102  
Toll free: +1 888 759-9118  
usa@vestergaardcompany.com

#### Vestergaard Company SASU

Bâtiment 3450 A, 4, Rue du Té  
93290 Tremblay-en-France • France  
Tel.: +33 1 30 34 55 87  
france@vestergaardcompany.com

#### Vestergaard Company Ltd.

Pinthong Industrial Estate  
789/50 Moo 1, Nongkham  
Chonburi 20230 • Thailand  
Tel: +66 (0) 38 348 630  
asia@vestergaardcompany.com